

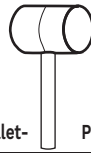
Base Cabinet Assembly Instructions

These directions will work for the Base End Shelf: BES24

Tools you may need:



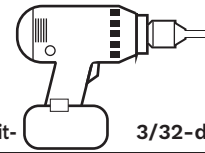
Rubber Mallet-



Philips Screw Driver-



Drill with #2 Phillips Bit-



3/32-drill bit-



Small Screw

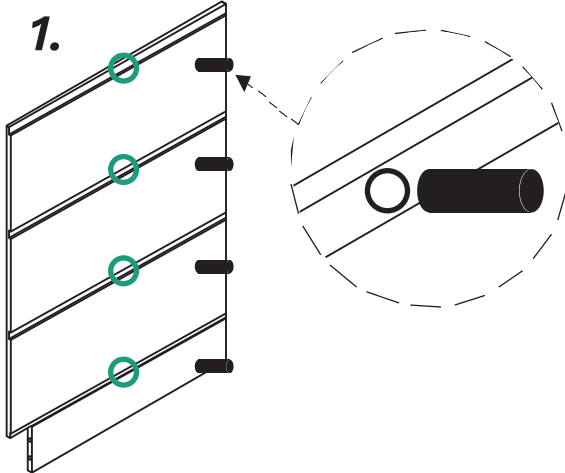


Medium Screw

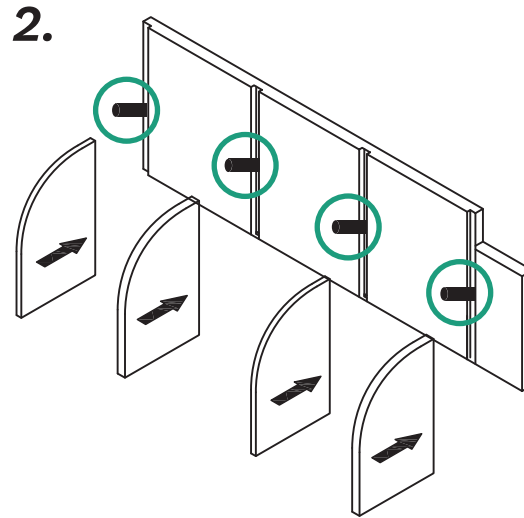


Large Screw

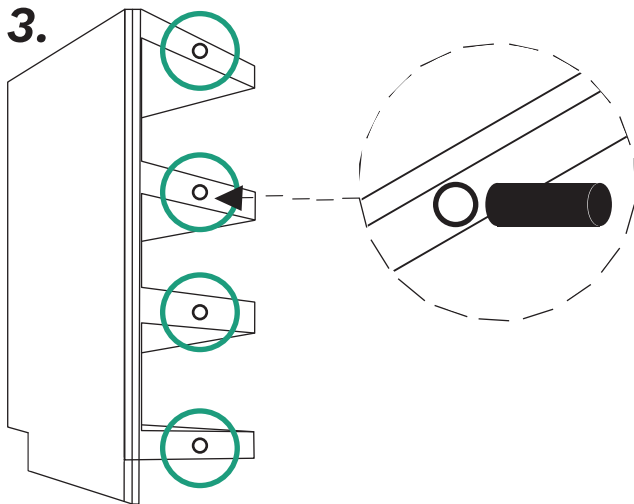
1. Start with the larger of the two wall panels and Insert a wooden peg into each designated peg hole on the wall.



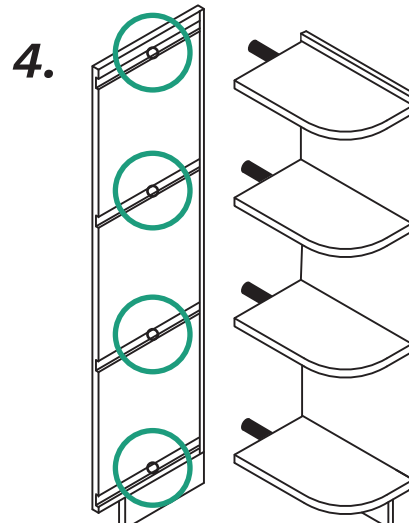
2. Secure the top, bottom, and shelves to the larger wall by inserting the pegs on the wall into the designated peg holes on each top, bottom, and shelf piece. Be sure that the painted edges of the top, bottom, and shelf pieces are not against the wall.



3. Insert a wooden peg into the designated peg holes on the ends of the top, bottom, and shelf pieces.

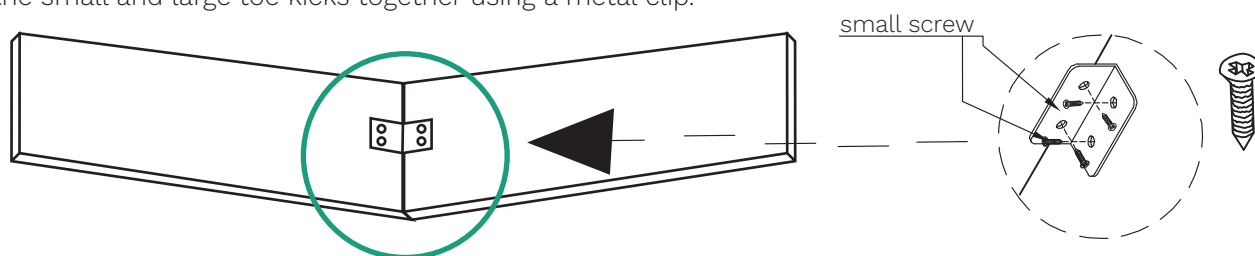


4. Secure the smaller wall to the top bottom and shelf pegs by inserting the pegs into the designated peg holes on the small wall. Be sure that all painted edges are visible.

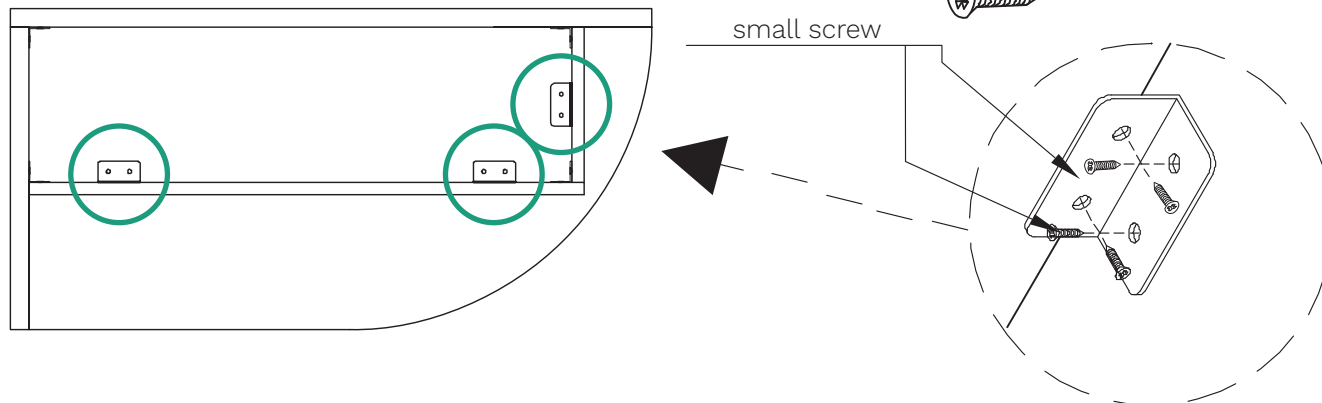


5a. Secure the small and large toe kicks together using a metal clip.

5a.

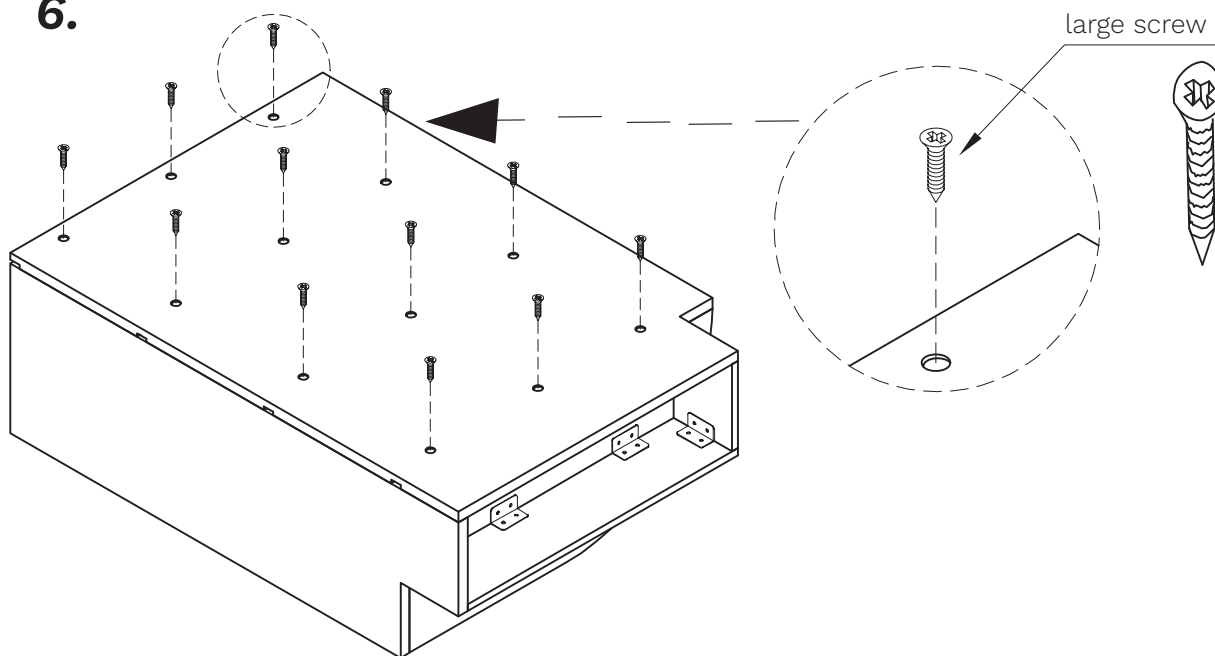


5b. Secure the small and large toe kicks to the small and large walls on the under side of the bottom shelf using two metal clips. Secure the metal clips using four small screws per clip. **5b.**



6. Flip the shelf upright. Use large screws to secure both walls, top, bottom, and the shelves together using the designated screw holes.

6.



Complete

